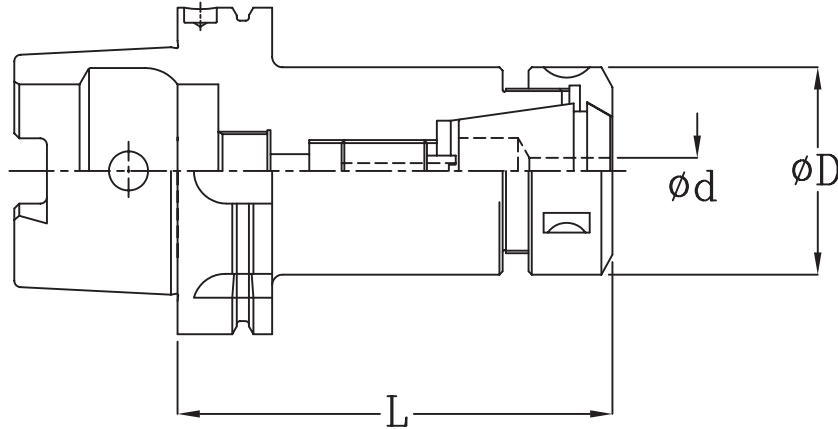




MODEL CHE/HSK (DIN 69893 A+C)
(THRU. COOLANT)

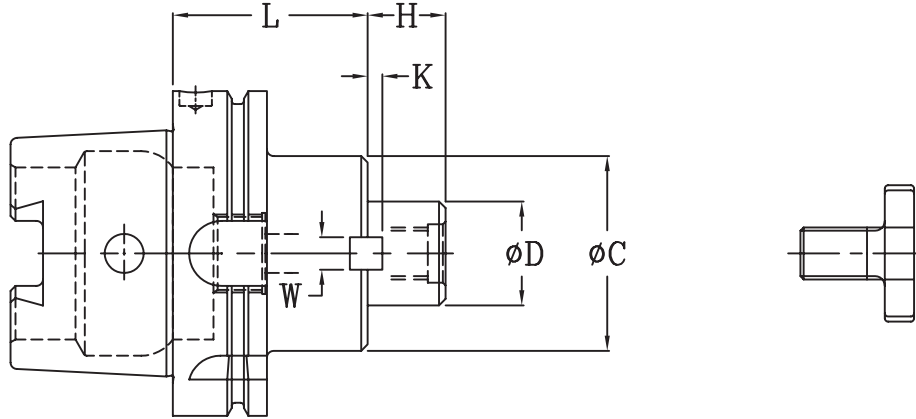


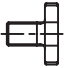
MODEL	ORDERING NUMBER	Suitable ER Collet Size	ød Range	J	øD	L	
HSK-32	CHE 16-65	87,271,113	ER-16	3 - 10	M10X1.50	28	65
	CHE 25-70	87,271,314	ER-25	3 - 16	M16X2	42	70
HSK-40	CHE 16-70	87,272,114	ER-16	3 - 10	M10X1.50	28	70
	CHE 25-80	87,272,316	ER-25	3 - 16	M16X2	42	80
	CHE 32-100	87,272,420	ER-32	3 - 20	M18X1.50	50	100
HSK-50	CHE 16-80	87,273,116	ER-16	3 - 10	M10X1.50	28	80
	CHE 25-95	87,273,319	ER-25	3 - 16	M16X2	42	95
	CHE 32-100	87,273,420	ER-32	3 - 20	M18X1.50	50	100
HSK-63	CHE 16-90	87,274,118	ER-16	3 - 10	M10X1.50	28	90
	CHE 25-90	87,274,318	ER-25	3 - 16	M16X2	42	90
	CHE 32-100	87,274,420	ER-32	3 - 20	M18X1.50	50	100
	CHE 40-120	87,274,524	ER-40	4 - 26	M22X1.50	63	120
HSK-100	CHE 32-100	87,276,420	ER-32	3 - 20	M18X1.50	50	100
	CHE 40-120	87,276,524	ER-40	4 - 26	M22X1.50	63	120
	CHE 50-130	87,276,626	ER-50	10 - 34	M22X1.50	78	130

- * Each holder is supplied with a clamping nut and spanner.
- * ER Collet is not included in collet holder. Please order separately.
- * Length L increment also available on request.



MODEL FMC/HSK (DIN 69893 A+C)
(THRU. COOLANT)



MODEL	ORDERING NUMBER	ϕD	L	ϕC	H	W	K		
HSK-40	FMC 16-45	81,721,609	16	45	32	17	8	5.00	961,116
	FMC 22-50	81,722,210	22	50	40	19	10	5.60	961,122
	FMC 27-55	81,722,711	27	55	48	21	12	6.30	961,127
HSK-50	FMC 16-45	81,731,609	16	45	32	17	8	5.00	961,116
	FMC 22-50	81,732,210	22	50	40	19	10	5.60	961,122
	FMC 27-60	81,732,712	27	60	48	21	12	6.30	961,127
	FMC 32-60	81,733,212	32		58	24	14	7.00	961,132
HSK-63	FMC 16-45	81,741,609	16	45	32	17	8	5.00	961,116
	FMC 22-50	81,742,210	22	50	50	19	10	5.60	961,122
	FMC 27-60	81,742,712	27	60	60	21	12	6.30	961,127
	FMC 32-60	81,743,212	32		78	24	14	7.00	961,132
	FMC 40-60	81,743,412	40		70	27	16	8.00	961,134
HSK-100	FMC 16-45	81,761,610	16	45	32	17	8	5.00	961,116
	FMC 22-50	81762,210	22	50	40	19	10	5.60	961,122
	FMC 27-60	81,762,710	27	60	48	21	12	6.30	961,127
	FMC 32-60	81,763,212	32		58	24	14	7.00	961,132
	FMC 40-60	81,763,412	40		89	27	16	8.00	961,134
	FMC 50-70	87,764,014	50	70	120	30	18	9.00	961,140
	FMC 60-90	81,764,518	60	90	140	25	25.4	12.5	

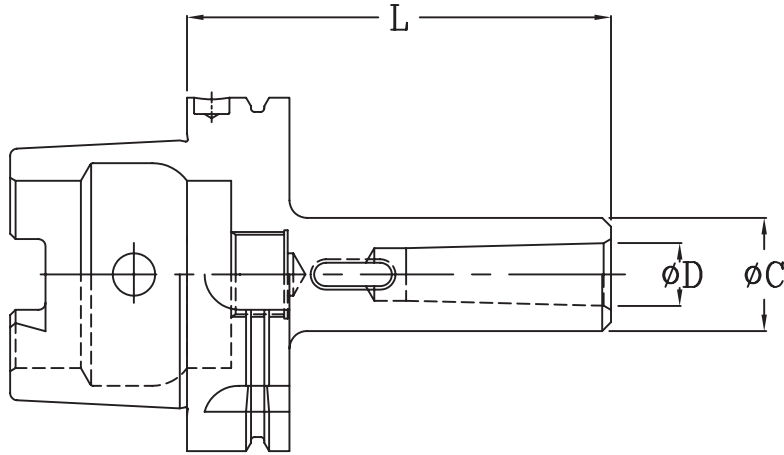
*HSK-80/125/160 Also Available upon Request.



Morse Taper Holder
for morse taper shank tools with tang. (IS 1715)

MODEL MTA

MODEL MTA/HSK (DIN 69893 A+C)



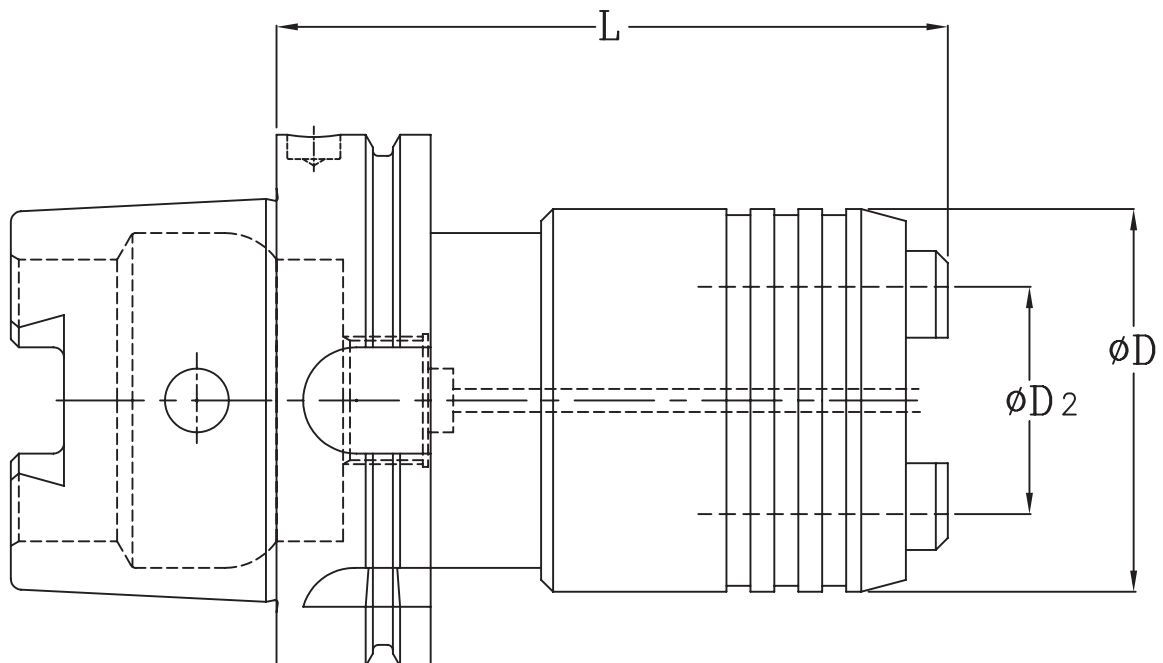
MODEL	ORDERING NUMBER	Female MT	øD	L	øC	
HSK-40	MTA 1- 95	88,072,119	1	12.065	95	25
	MTA 2 -110	88,072,221	2	17.780	110	32
	MTA 3 -135	88,072,327	3	23.825	135	38
HSK-50	MTA 1- 100	88,073,120	1	12.065	95	25
	MTA 2 -115	88,073,223	2	17.780	115	32
	MTA 3 -135	88.073,327	3	23.825	135	40
HSK-63	MTA 1- 100	88,074,120	1	12.065	95	25
	MTA 2 -115	88,074,223	2	17.780	115	32
	MTA 3 -135	88,074,327	3	23.825	135	40
	MTA 4- 160	88,074,432	4	31.267	160	48
HSK-100	MTA 2 -120	88,076,224	2	17.780	120	32
	MTA 3 -150	88,076,330	3	23.825	150	40
	MTA 1-170	88,076,434	1	31.267	170	48
	MTA 2-200	88,076,540	2	44.399	200	63



Quick Change Tapping Chuck
for rigid tapping cycle (solid type)

MODEL QCK

MODEL QCK/HSK (DIN 69893, A+C)
(THRU. COOLANT)



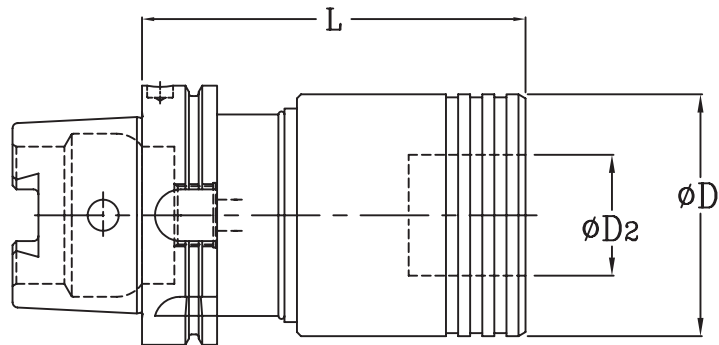
MODEL	ORDERING NO.	for taps	ϕD	ϕD_2	Suitable Adaptor	L
HSK-50	QCK-1	M 3-M12	32	19	1	80
	QCK-2	M 8-M20	50	31	2	100
HSK-63	QCK-1	M 3-M12	32	19	1	85
	QCK-2	M 8-M20	50	31	2	100
HSK-100	QCK-1	M 3-M12	32	19	1	90
	QCK-2	M 8-M20	50	31	2	110
	QCK-3	M14-M33	72	48	3	150



Quick Change Tapping Chucks
 With length compensation on compression and expansion

MODEL QCLC

MODEL QCLC/HSK (DIN 69893 A)



MODEL	For Taps	Suitable Adaptors Size	Length Compensation		øD	øD ₂	ORDERING NUMBER & L Taper DIN 69893 A			
			Comp.	Exp.			HSK-50	HSK-63	HSK-80	HSK-100
QCLC 115	M3 - M12	1	7.50	7.50	39	19	26,161,030 L-72	26,161,040 L-72	26,161,050 L-75	26,161,060 L-80
QCLC 220	M8 - M20	2	10.00	10.00	60	31	26,162,030 L-110	26,162,040 L-110	26,162,050 L-95	26,162,060 L-100
QCLC 335	M14 - M33	3	17.50	17.50	86	48		26,163,040 L-141	26,163,050 L-141	26,163,060 L-144

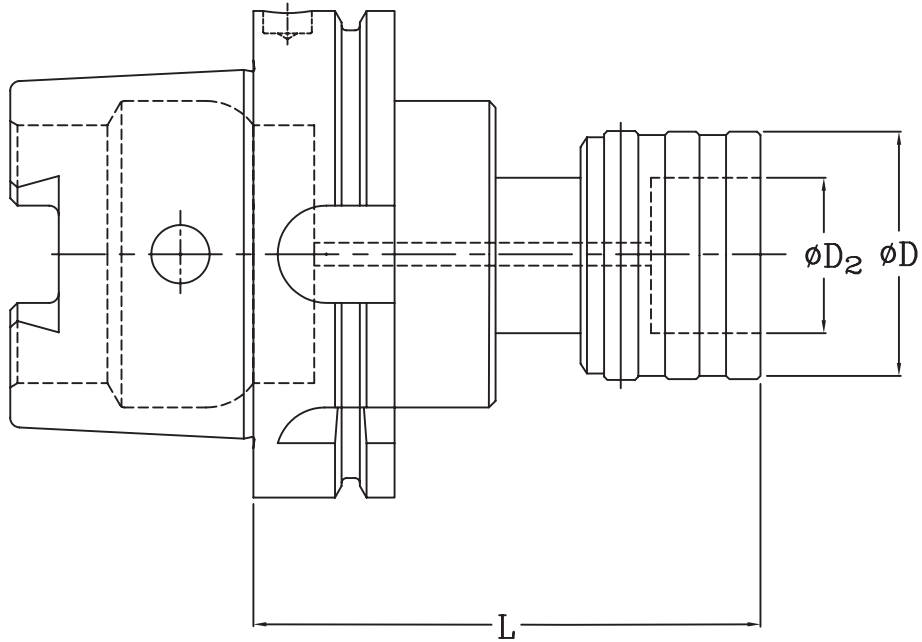


Side Lock Holder (DIN 6499)

MODEL QCLKE

With enlarged length compensation on comp. & exp.

MODEL QCLKE/HSK (DIN 69893 A)



MODEL	ORDERING NUMBER	L	For Taps	Suitable Adaptors Size	Length Compensation		ϕD	ϕD_2	
					Comp.	Exp.			
QCLKE 028-15	HSK-32	21,160,010	100	M1-M10	0	15	13	26	13
	HSK-40	21,160,020	120						
	HSK-50	21,160,030	125						
QCLKE 135-20	HSK-40	21,161,020	132	M3-M12	1	20	15	36	19
	HSK-50	21,161,030	136						
	HSK-63	21,161,040	138						
QCLKE 245-25	HSK-63	21,162,040	168	M8-M20	2	25	20	53	31
	HSK-100	21,162,060	174						



MODEL SL/HSK (DIN 69893 A+C)
(THRU. COOLANT)

FIG. 1

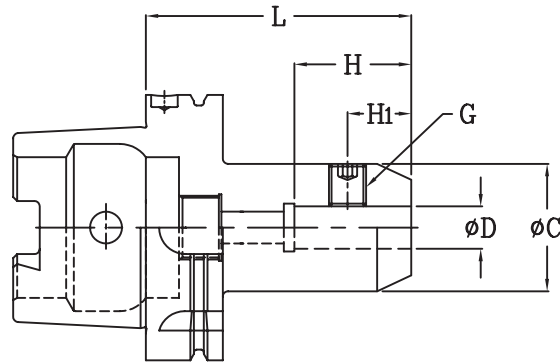
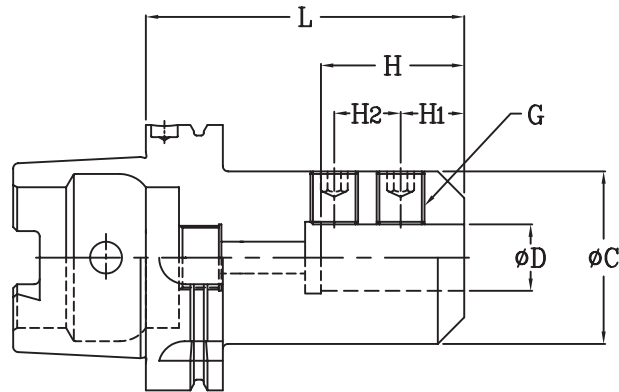


FIG. 2



MODEL	ORDERING NUMBER	FIG.	øD	L	øC	H	H ₁	H ₂	G
HSK-32	SL 6-60	84,710,612	6	60	25	36	18	-	M6
	SL 8-60	84,710,812	8		28				M8
	SL 10-65	84,711,013	10	65	35	40	20		M10
	SL 12-75	84,711,215	12	75	42	45	22.50		M12
	SL 14-75	84,711,415	14		44				M14
	SL 16-75	84,711,615	16		48	48	24		M14
HSK-40	SL 6-60	84,720,612	6	60	25	36	18	-	M6
	SL 8-60	84,720,812	8		28				M8
	SL 10-65	84,721,013	10	65	35	40	20		M10
	SL 12-70	84,721,214	12	70	42	45	22.50		M12
	SL 14-70	84,721,414	14		44				M14
	SL 16-80	84,721,616	16	80	48	48	24		M14
	SL 18-80	84,721,816	18		50				M16
	SL 20-80	84,722,016	20		52	50	25		M16

(CONTINUE)



Side Lock Holder

For endmills holders (WELDON). (DIN 1885/B)

MODEL SL

MODEL	ORDERING NUMBER	FIG.	∅D	L	∅C	H	H ₁	H ₂	G		
HSK-50	SL 6 - 65	84,730,613	6	65	25	36	18	-	M6		
	SL 8 - 65	84,730,813	8		28				M8		
	SL 10 - 65	84,731,013	10		35	40	20		M10		
	SL 12 - 80	84,731,216	1	12	80	42	45		22.50	M12	
	SL 14 - 80	84,731,416		14		44				M14	
	SL 16 - 80	84,731,616		16	48	48	24		M14		
	SL 18 - 80	84,732,816		18	50	48	24		M14		
	SL 20 - 80	84,732,016		20	52	50	25		M16		
	SL 25- 105	84,732,521	2	25	105	65	56		24	25	M18
HSK-63	SL 6 - 65	84,740,613	6	65	25	36	18	-	M6		
	SL 8 - 65	84,740,813	8		28				M8		
	SL 10 - 65	84,741,013	10		35	40	20		M10		
	SL 12 - 80	84,741,216	1	12	80	42	45		22.50	M12	
	SL 14 - 80	84,741,416		14		44				M14	
	SL 16 - 80	84,741,616		16	48	48	24		M14		
	SL 18 - 80	84,741,816		18	50	48	24		M14		
	SL 20 - 80	84,742,016		20	52	50	25		M16		
	SL 25- 110	84,742,522	2	25	110	65	56		24	25	M18
	SL 32- 110	84,743,222		32		72				60	28
HSK-100	SL 6 - 90	84,760,618	6	90	25	36	18	-	M6		
	SL 8 - 90	84,760,818	8		28				M8		
	SL 10 - 90	84,761,018	10		35	40	20		M10		
	SL 12 - 100	84,761,220	1	12	100	42	45		22.50	M12	
	SL 14 - 100	84,761,420		14		44				M14	
	SL 16 - 100	84,761,620		16	48	48	24		M14		
	SL 18 - 100	84,761,820		18	50	48	24		M14		
	SL 20 - 110	84,762,022		20	52	50	25		M16		
	SL 25- 120	84,762,524	2	25	120	65	56		24	25	M18
	SL 32- 120	84,763,224		32		72				60	28
	SL 40- 120	84,763,424		40		80	70		30	32	

* HSK - 80/125/160 Also Available upon Request.



MODEL SLA/HSK (DIN 69893 A+C)
(THRU. COOLANT)

FIG. 1

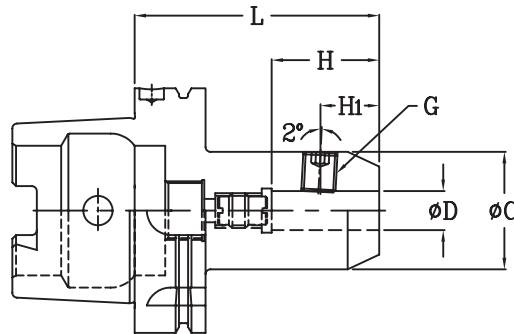
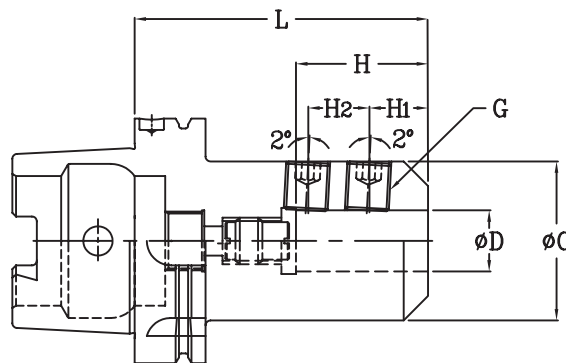


FIG. 2



MODEL	ORDERING NUMBER	FIG.	øD	L	øC	H	H ₁	H ₂	G		
HSK-40	SLA 6-80	85,720,616	6	80	25	36	18	-	M6		
	SLA 8-80	85,720,816	8		28				M8		
	SLA 10-80	85,721,016	10		35				40	20	M10
	SLA 12-90	85,721,218	1	12	90	42	45		22.50	M12	
	SLA 14-90	85,721,418		14		44				M14	
	SLA 16-100	85,721,620	100	16	48	48	24		M14		
	SLA 18-100	85,721,620		18	50				M16		
	SLA 20-100	85,722,020		20	52				50	25	M16
HSK-50	SLA 6-80	85,730,616	6	80	25	36	18	-	M6		
	SLA 8-80	85,730,816	8		28				M8		
	SLA 10-80	85,731,016	10		35				40	20	M10
	SLA 12-90	85,731,218	1	12	90	42	45		22.50	M12	
	SLA 14-90	85,731,418		14		44				M14	
	SLA 16-100	85,731,620	100	16	48	48	24		M14		
	SLA 18-100	85,731,820		18	50				M16		
	SLA 20-100	85,732,020		20	52				50	25	M16
	SLA 25-110	85,732,522	2	25	110	65	56		24	22	M18
	SLA 32-120	85,733,224		32	120	72	60			24	M20

(CONTINUE)



Side Lock Holder

For endmills holders (WHISTLE-NOTCH). (DIN 1835/E)

MODEL SLA

MODEL	ORDERING NUMBER	FIG.	ØD	L	ØC	H	H ₁	H ₂	G		
HSK-63	SLA 6-80	85,740,616	6	80	25	36	18	-	M6		
	SLA 8-80	85,740,816	8		28				M8		
	SLA 10-80	85,741,016	10		35	40	20		M10		
	SLA 12-90	85,741,218	1	12	90	42	45		22.50	M12	
	SLA 14-90	85,741,418		14		44				M14	
	SLA 16-100	85,741,620	100	16	100	48	48		24	M14	
	SLA 18-100	85,741,820		18		50				M16	
	SLA 20-100	85,742,020		20		52	50		25	M18	
	SLA 25-110	85,742,522	2	25	110	65	56		24	22	M18
	SLA 32-115	85,743,223		32	115	72	60			24	M20
HSK-100	SLA 6-90	85,760,618	6	90	25	36	18	-	M6		
	SLA 8-90	85,760,818	8		28				M8		
	SLA 10-90	85,761,018	10		35	40	20		M10		
	SLA 12-100	85,761,220	1	12	100	42	45		22.50	M12	
	SLA 14-100	85,761,420		14		44				M14	
	SLA 16-100	85,761,620	100	16	100	48	48		24	M14	
	SLA 18-100	85,761,820		18		50				M16	
	SLA 20-110	85,762,022		20		110	52		50	25	M18
	SLA 25-120	85,762,524	2	25	120	65	56		24	22	M18
	SLA 32-120	85,763,224		32		72	60			24	M20
	SLA 40-130	85,763,426		40		130	80		70	30	32

*HSK-80/125/160 Also Available upon Request.